



Coimisiún na Scrúduithe Stáit
State Examinations Commission

Leaving Certificate Examination 2025

Music

Composing

Higher Level

Thursday 19 June Afternoon 3:15 - 4:45

100 marks

Examination Number

<input type="text"/>	<input type="text"/>	<input type="text"/>	<input type="text"/>	<input type="text"/>	<input type="text"/>
----------------------	----------------------	----------------------	----------------------	----------------------	----------------------

Date of Birth

<input type="text"/>	<input type="text"/>	/	<input type="text"/>	<input type="text"/>	/	<input type="text"/>	<input type="text"/>
----------------------	----------------------	---	----------------------	----------------------	---	----------------------	----------------------

For example, 3rd February
2005 is entered as 03 02 05

Centre Stamp

Instructions

Write your examination number and Date of Birth in the boxes on the front cover.

There are **two** sections in this examination paper.

Section A	Melody Composition	40 marks	3 questions
Section B	Harmony	60 marks	3 questions

- Answer as follows:
 - one question from Section **A** – Melody Composition
- and**
- one question from Section **B** – Harmony
- Write your answers in blue or black pen. You may use pencil for staff notation.
 - Write your answers in the spaces provided in this booklet. There is space for extra work at the end of the booklet. Label any extra work clearly with the question number and part.
 - This examination booklet will be scanned and your work will be presented to an examiner on screen. Anything that you write outside of the answer areas may not be seen by the examiner.

Answer **one** question only in this section:

Question 1 Continuation of a given opening (40 marks)

or

Question 2 Setting music to a given text (40 marks)

or

Question 3 Composing to a given dance rhythm or metre or form (40 marks)

Question 1

(40 marks)

Continuation of a given opening

- Continue the given opening to make a 16-bar melody.
- Include a modulation to the dominant at a suitable point.
- Add appropriate performing directions (phrasing and dynamics) to the melody.
- Choose a suitable instrument for your melody from the following list:

- ☐ oboe
- ☐ violin
- ☐ clarinet
- ☐ trumpet

Roughwork

The roughwork area contains four sets of five-line musical staves, providing space for students to draft their melody.

Moderato

mf

1 2 3 4

Question 2

(40 marks)

Setting music to a given text

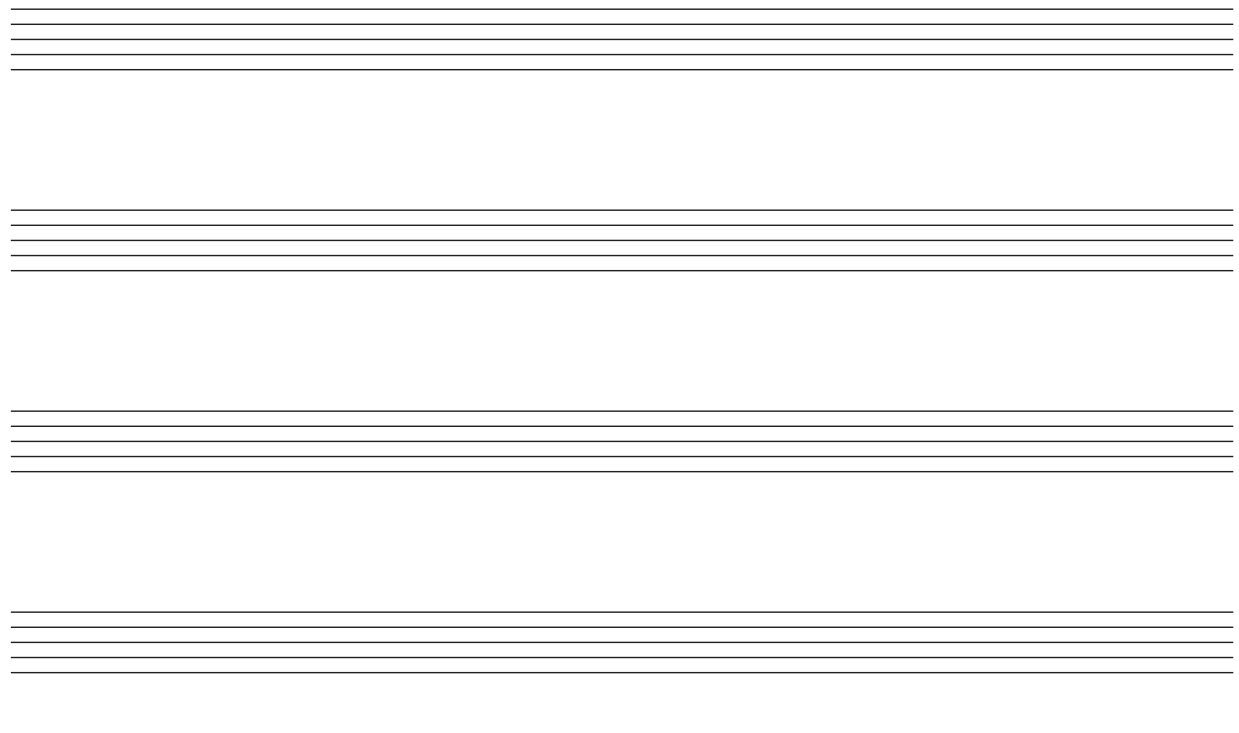
Here is an extract from the poem *Sunset* by Anonymous.

Now the sun is sinking in the golden west;
The birds and bees and children all have gone to rest;
And the merry streamlet, as it runs along,
With a voice of sweetness sings its evening song.

The opening line has been set for you.

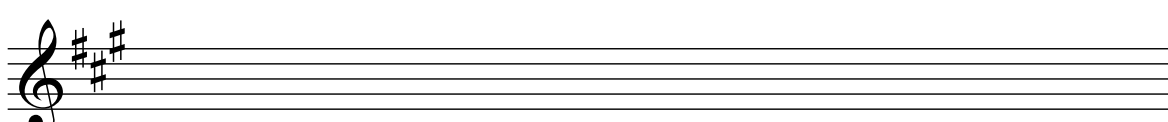
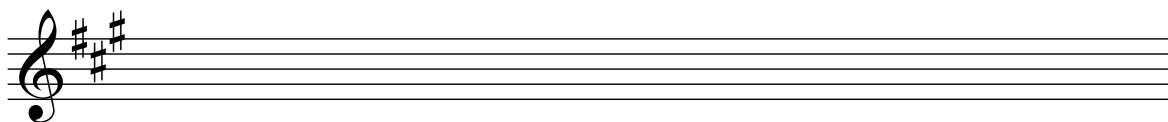
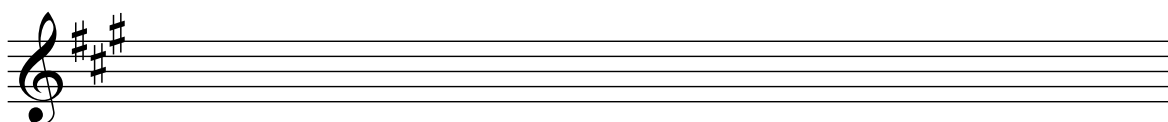
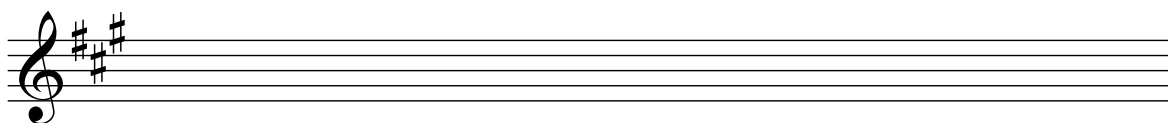
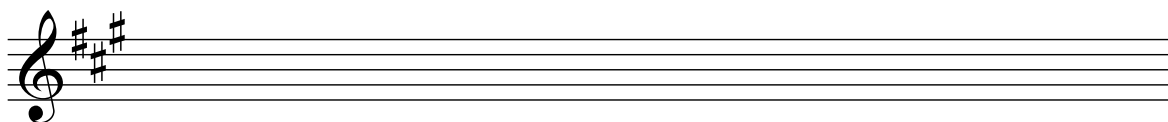
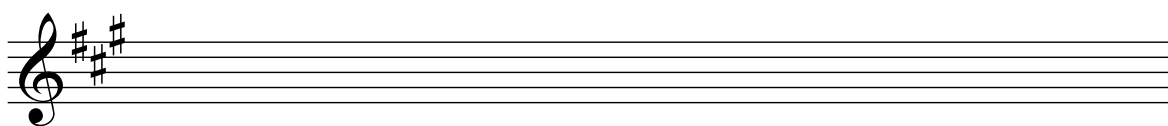
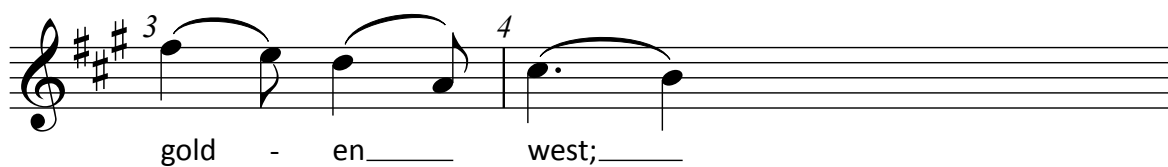
- Set the remaining words to make a melody of 16 bars.
(You may exceed this number of bars and include a modulation, if you wish.)
- Add appropriate performing directions (phrasing and dynamics) to the melody.

Roughwork



Moderato

mf



Question 3

(40 marks)

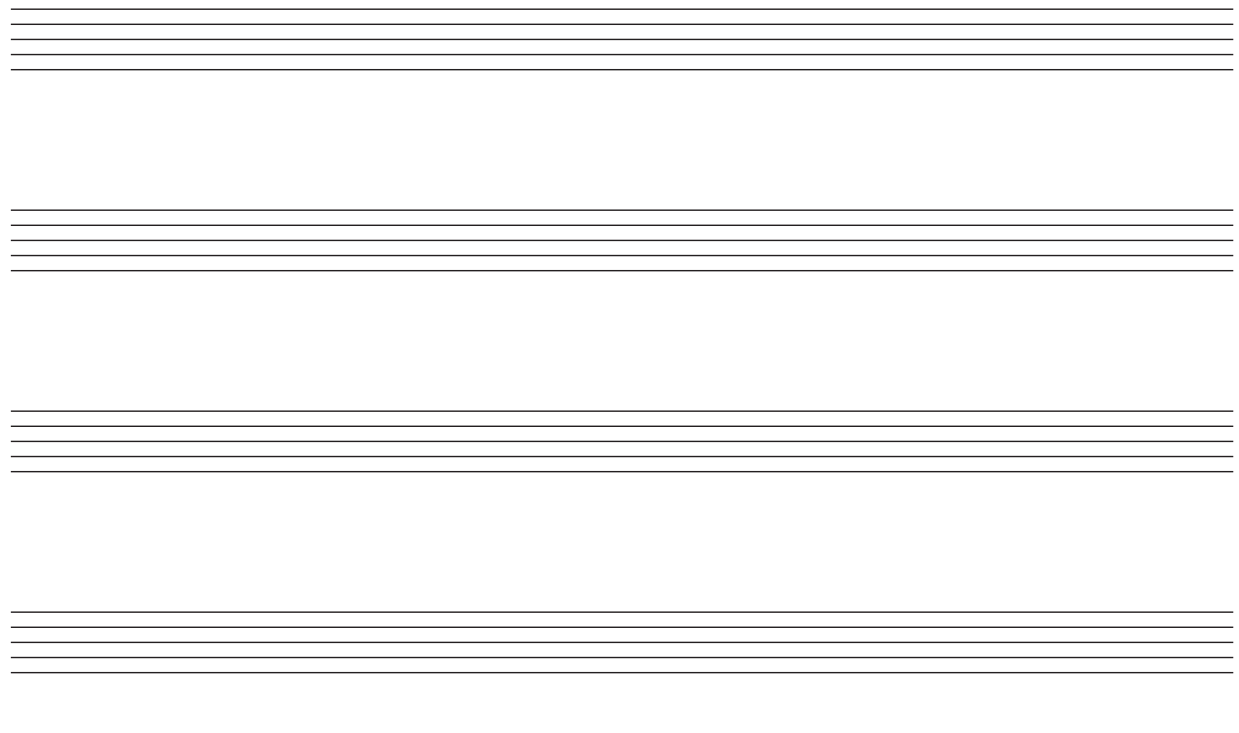
Composing to a given dance rhythm or metre or form

The opening phrase of a gavotte is given.

- Continue the given opening to make a 16-bar melody.
- Use the form AA¹BB¹.
- Add appropriate performing directions (phrasing and dynamics) to the melody.
- Choose a suitable instrument for your melody from the following list:

- ☐ flute
- ☐ violin
- ☐ oboe
- ☐ descant recorder

Roughwork



Moderato

Do not write on this page

Answer **one** question only in this section:

Question 4 Composing melody and bass notes from a set of chords (60 marks)

or

Question 5 Composing bass notes and chord indications to a given tune (60 marks)

or

Question 6 Adding a countermelody or descant and chordal support to a given tune (60 marks)

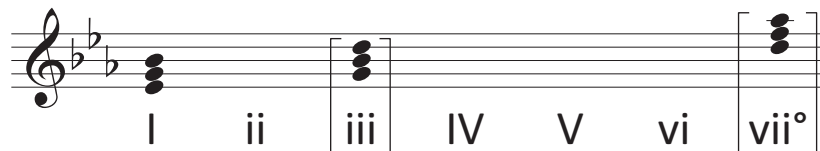
Question 4

(60 marks)

Composing melody and bass notes from a set of chords

Preparatory work: Plot the chords available in the key of E \flat major, either in the chord bank grid or on the staff below.

Notes of chord	B \flat G E \flat		D B \flat G				A \flat F D
Chord symbol	E \flat		Gm				D $^{\circ}$
Roman numeral	I	ii	iii	IV	V	vi	vii $^{\circ}$



- Study the following piece of music.
- Using the chords indicated, compose melody and bass notes to complete the piece in the given style.

<p>$E\flat$ 5</p>	<p>$A\flat$ 6</p>	<p>$B\flat 7$</p>	<p>Cm 7</p>	<p>$Fm/A\flat$</p>
<p>$B\flat$ 8</p>	<p>$E\flat$ 9</p>	<p>Cm</p>	<p>$A\flat$ 10</p>	<p>Fm</p>
<p>$B\flat/D$ 11</p>	<p>$E\flat$</p>	<p>$B\flat$ 12</p>	<p>$E\flat$ 13</p>	<p>$E\flat/G$</p>
<p>$Fm/A\flat$ 14</p>	<p>$B\flat$</p>	<p>Cm 15</p>	<p>$A\flat$</p>	<p>$E\flat$ 16</p>

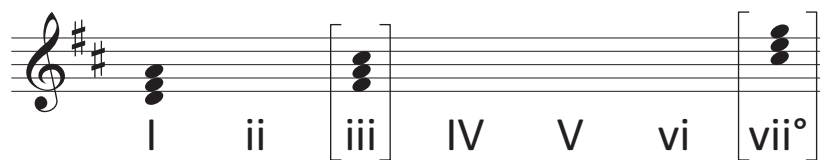
Question 5

(60 marks)

Composing bass notes and chord indications to a given tune

Preparatory work: Plot the chords available in the key of D major, either in the chord bank grid or on the staff below.

Notes of chord	A F# D		C# A F#				G E C#
Chord symbol	D		F#m				C#°
Roman numeral	I	ii	iii	IV	V	vi	vii°



- Study the following piece of music.
- Add suitable bass notes and chord indications in the style of the given opening.
- Do not use the same chord in the same position in adjacent boxes.
- You may use either chord symbols or Roman numerals, but not both.

5 6 7

8 9 10

11 12 13

14 15 16

Question 6

(60 marks)

Adding a countermelody or descant and chordal support to a given tune

Preparatory work: Plot the chords available in the key of C minor, either in the chord bank grid or on the staff below.

Notes of chord	G E \flat C	A \flat F D	B G E \flat				F D B
Chord symbol	Cm	D $^{\circ}$	E \flat $^{+}$				B $^{\circ}$
Roman numeral	i	ii $^{\circ}$	III $^{+}$	iv	V	VI	vii $^{\circ}$

i ii $^{\circ}$ [III $^{+}$] iv V VI [vii $^{\circ}$]

- Study the following piece of music.
- Insert suitable chord indications in the boxes provided.
- Continue the descant part in the given style to complete the piece.
- Do not use the same chord in the same position in adjacent boxes.
- You may use either chord symbols or Roman numerals, but not both.

Chord symbols for Descant: i (Cm), VI (A \flat), iv (Fm), V (G), i (Cm), iv (Fm), V (G)

Chord symbols for Melody: i (Cm), VI (A \flat), iv (Fm), V (G), i (Cm), iv (Fm), V (G)

5 6 7

8 9 10

11 12 13

14 15 16

Extra work

The 'Extra work' section is a large rectangular area defined by a black border. It contains ten sets of five horizontal lines each, arranged vertically. These lines are intended for musical notation or additional work. The sets are separated by small gaps, and each set consists of five parallel horizontal lines.

Do not write on this page

Do not write on this page

Copyright notice

This examination paper may contain text or images for which the State Examinations Commission is not the copyright owner, and which may have been adapted, for the purpose of assessment, without the authors' prior consent. This examination paper has been prepared in accordance with Section 53(5) of the *Copyright and Related Rights Act, 2000*. Any subsequent use for a purpose other than the intended purpose is not authorised. The Commission does not accept liability for any infringement of third-party rights arising from unauthorised distribution or use of this examination paper.

Leaving Certificate – Higher Level

Music Composing

Thursday 19 June

Afternoon 3:15 - 4:45